

JARUP

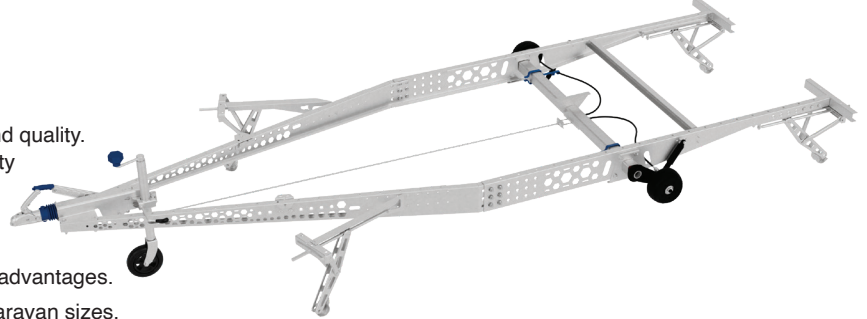
**ONE CHASSIS
FOR MULTIPLE
SIZES!**

THANKS TO JARUP'S INNOVATIVE EXPANDABLE CHASSIS SYSTEM, YOU CAN PRODUCE CARAVANS IN DIFFERENT SIZES WITH JUST ONE CHASSIS!

JARUP CHASSIS READY SET (1350 KG)

JARUP chassis are designed with superior engineering and quality. Every detail is meticulously calculated to ensure your safety when you hit the road. Made from durable materials, this chassis offers maximum safety and performance even in challenging road conditions.

- The expandable chassis system provides flexible usage advantages.
- No need to maintain different chassis stock for various caravan sizes.
- Maximum efficiency with minimal stock.
- Shortened chassis size: 4947 mm
- Extended chassis size: 5427 mm



Code JR370430

Whether you're taking short or long trips, by choosing JARUP chassis, you ensure reliability and durability without compromise in any situation.

The JARUP axle is surrounded by 4 rubber elements instead of 3.

Why is 4 rubber elements important?

Load Distribution and Balance: Four rubber elements increase the load capacity, helping distribute the weight more evenly. This allows the caravan to move in a more balanced and stable manner. In particular, for larger caravans carrying heavy loads, this balance enhances safety during the journey.

Road Grip and Stability: More rubber improves the caravan's road grip. With more tires in contact with the ground, the risk of slipping or swerving is reduced, especially at high speeds or in challenging road conditions.

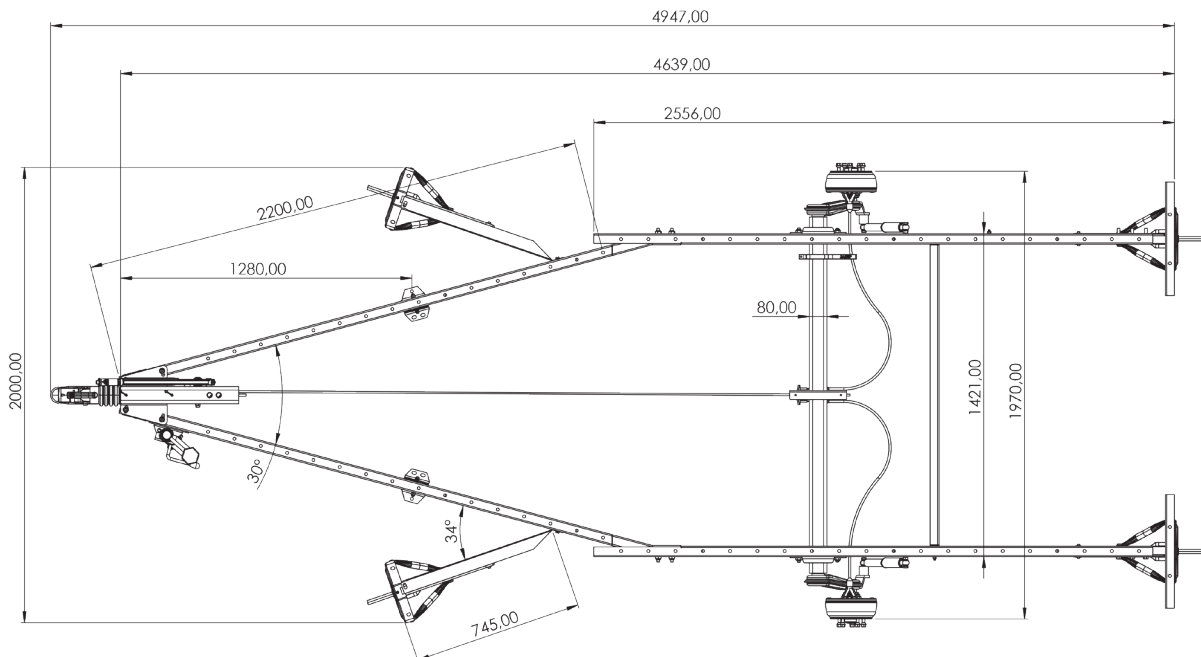
Braking Performance: Four rubber elements can significantly increase the caravan's load capacity. This is especially important for larger caravans, as the large amount of equipment and belongings the caravan needs to carry can be managed more efficiently with additional axles.

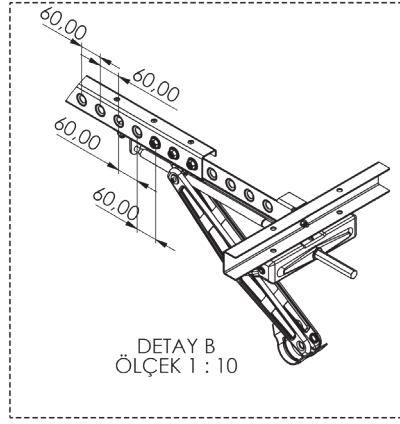
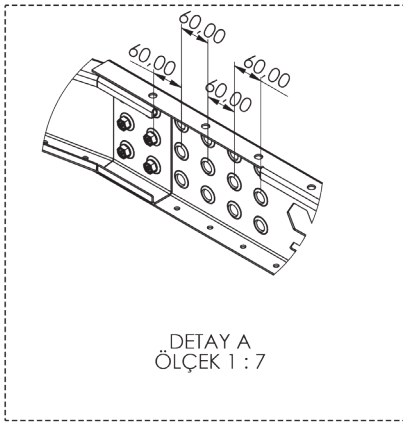
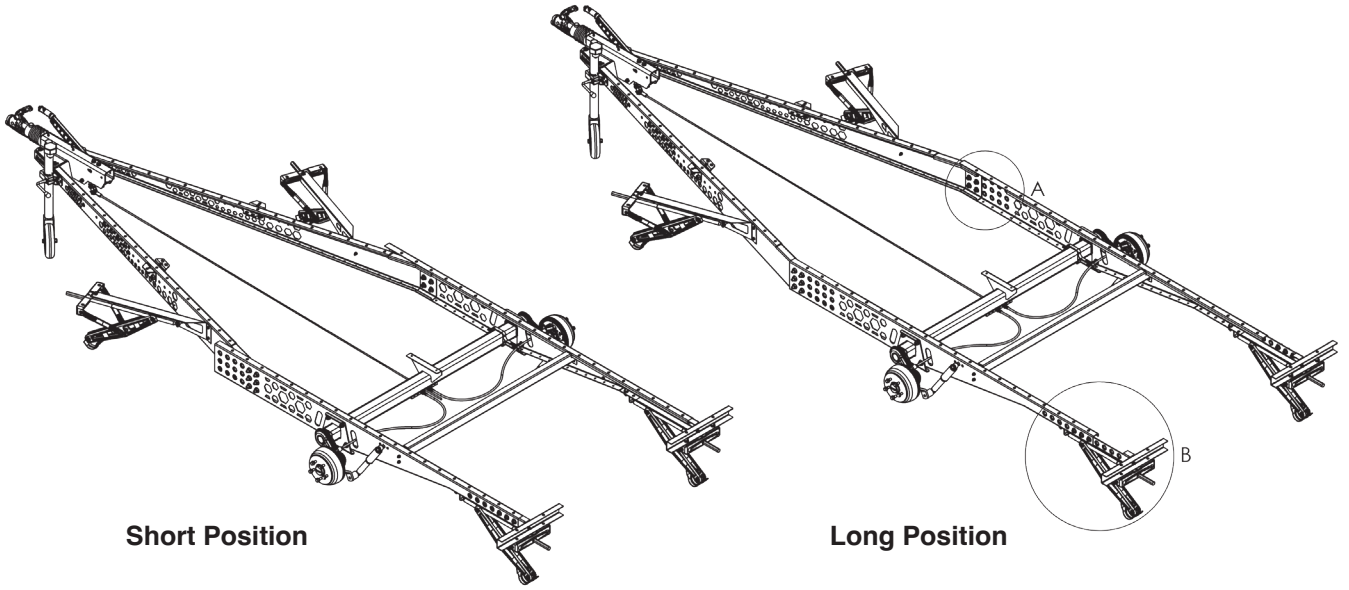
High Load Capacity: Four rubber elements can significantly increase the caravan's load capacity. This is especially important for larger caravans, as the large amount of equipment and belongings the caravan needs to carry can be managed more efficiently with additional axles.

Reduced Road Damage: The caravan's weight is distributed more evenly across the four rubber elements, resulting in less pressure on the road. This reduces damage to the road surface and minimizes deformation.

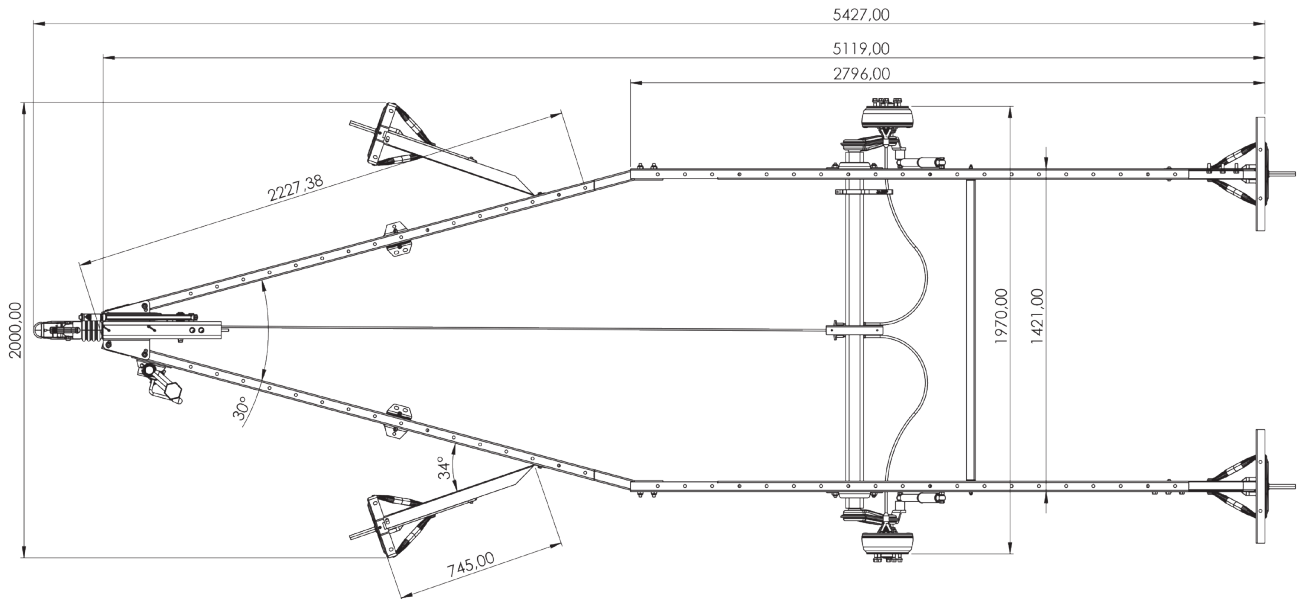
Suspension System: More rubber helps the suspension system work more effectively. This ensures the caravan moves more smoothly on the road and enhances driving comfort.

Note: For custom sizes, please contact us.



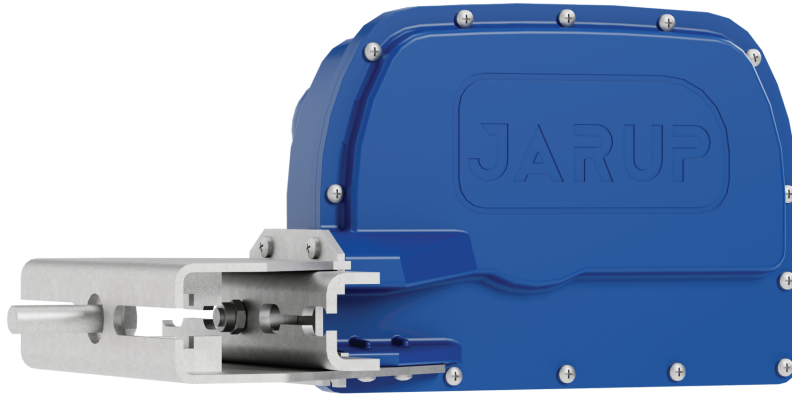


Note: The chassis can be extended by 240 mm at the front and 240 mm at the rear, with 60 mm increments, allowing a total extension of 480 mm.



STS - STABILITY TRACTION SYSTEM

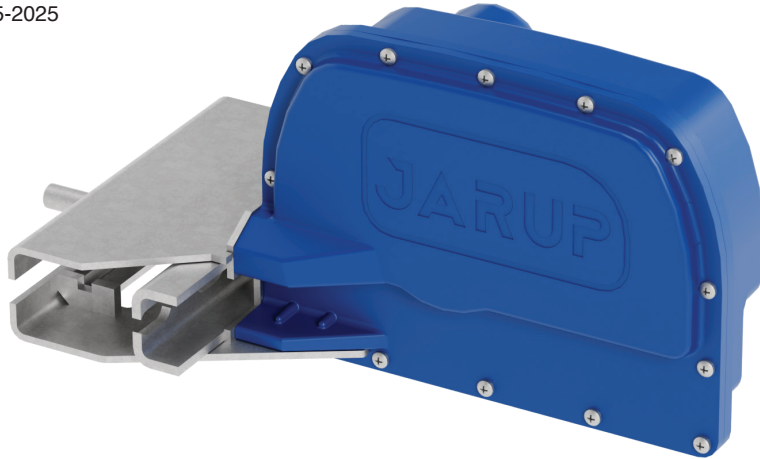
STS is a high-quality solution that enhances safety for towing caravans. This system is specifically designed to minimize the risks of swerving and skidding, ensuring that caravans move in a more stable and controlled manner. Manufactured with advanced engineering technologies, STS provides reliable performance even under challenging road conditions, thanks to its robust structure. Easily integrated into the chassis and infrastructure systems of caravans, this anti-swerve system not only increases driving safety but also contributes to the vehicle's long-lasting durability.



Technical Specifications

Minimum empty weight : 1000 kg
Maximum weight : 1800 kg
Wheel brake type : 20-2425/1; 25-2025
Weight : 5,36 kg

Code JRS02025



BRAKED AXLE SET

1 - BRAKED COUPLING

(800 KG – 1600 KG)

The braked coupling is an important component that makes the connection between your caravan and tow vehicle safer and more controlled. This system enhances the safety of your caravan, providing greater control during your journeys, and ensures that the caravan stays securely attached to the tow vehicle during emergency braking situations.

Quick and Effective Braking: The braked coupling integrates your caravan's braking system with the tow vehicle. This ensures that when the brakes are applied, the caravan's speed decreases in sync with the tow vehicle. As a result, the risk of the caravan swerving or placing additional load on the tow vehicle is reduced, allowing both vehicles to stop in a more controlled manner.

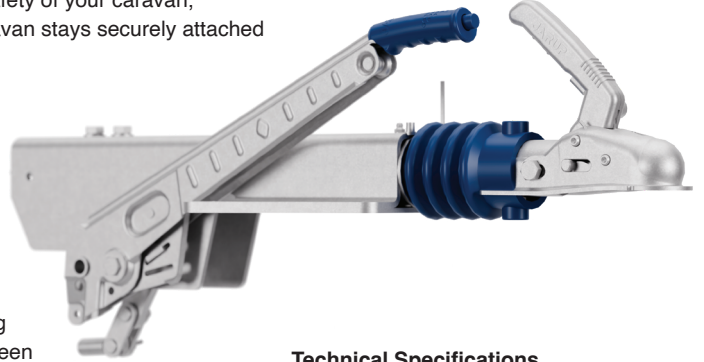
High Security: The braked coupling enhances safety, especially during long journeys and in heavy traffic. By strengthening the connection between the tow vehicle and the caravan, it ensures that both vehicles move more steadily in the event of sudden situations.

Less Vibration: The braked coupling minimizes the caravan's movement and vibrations, offering a more stable driving experience, especially on turns and downhill descents. This ensures that your caravan moves more steadily on the road and provides a more comfortable experience during your journey.

Long Lifespan and Durability: The braked coupling, made from high-quality materials, is designed for long-term use and performs excellently even under harsh road conditions. It ensures a secure and strong connection between the tow vehicle and the caravan.

The braked coupling system enhances the security and stability of the connection between your caravan and tow vehicle, taking your safety a step further on every journey. With this system, you will experience a more controlled, comfortable, and secure driving experience in any situation.

Note: For couplings with different sizes of brakes, please contact us.

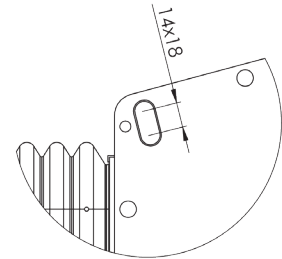
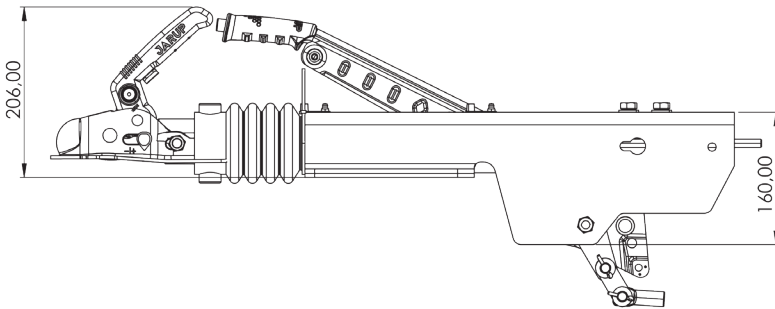


Technical Specifications

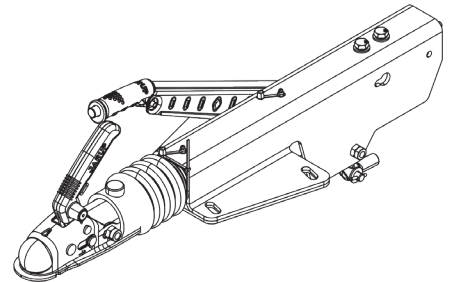
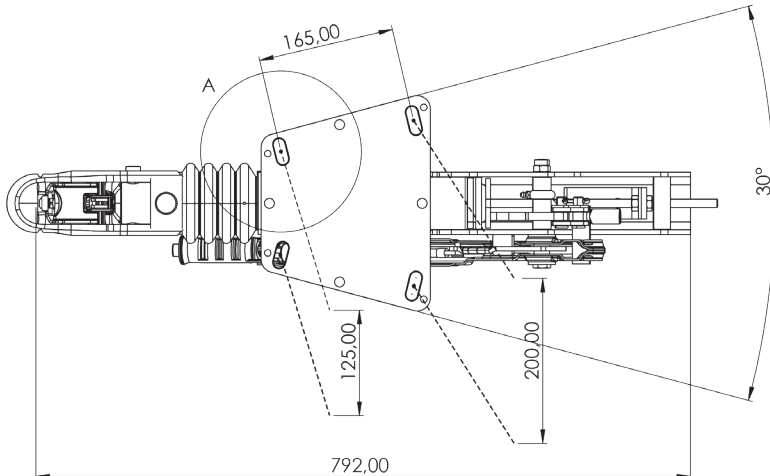
Permitted total weight : 800-1600 kg

Weight : 11.20 kg

Code JRO80200



DETAY A
ÖLÇEK 1 : 3



BRAKED AXLE SET

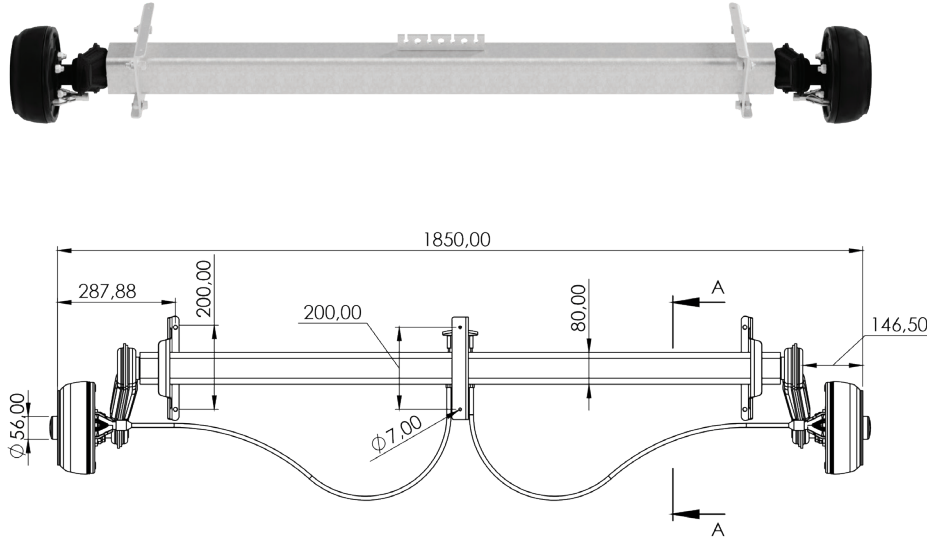
2 - BRAKED AXLE

(1350 KG)

Technical Specifications

| | |
|------------------|------------|
| Axle Load | : 1350 kg |
| Weight | : 52 kg |
| Flange Size | : 1850 mm |
| Wheel Connection | : 100x4 mm |
| Support Size | : 1400 mm |

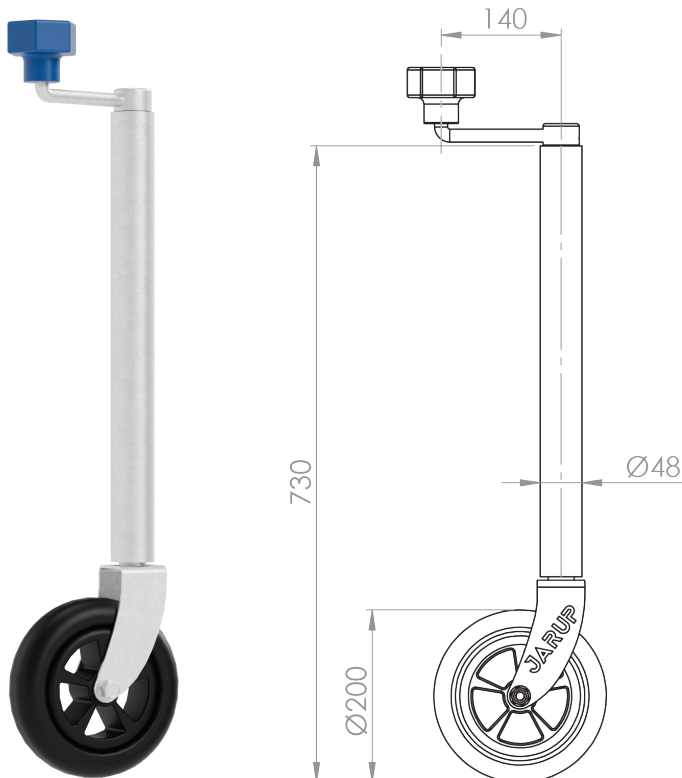
Code JRD01350



Note: Please contact us for axles with different brake sizes.

3 - SUPPORT WHEEL

The support wheel provides great convenience when parking and maneuvering your caravan. It is an essential piece of equipment for securing, moving, or safely parking your caravan. With its durable structure and practical design, it assists you on every journey.



Technical Specifications

| | |
|---------------------------|--------------|
| Max static load capacity: | 150 kg |
| Center | : 220 mm |
| Surface treatment | : Galvanized |
| Weight | : 4 kg |
| Outer tube diameter | : 48 mm |
| Wheel size | : 200x50 mm |

Code JRJ00500

Note: Please contact us for support wheels with different sizes.

BRAKED AXLE SET

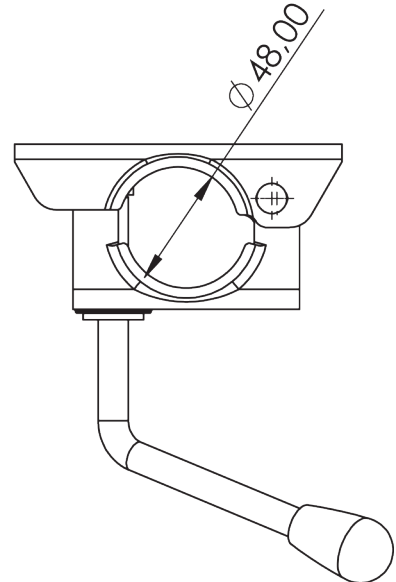
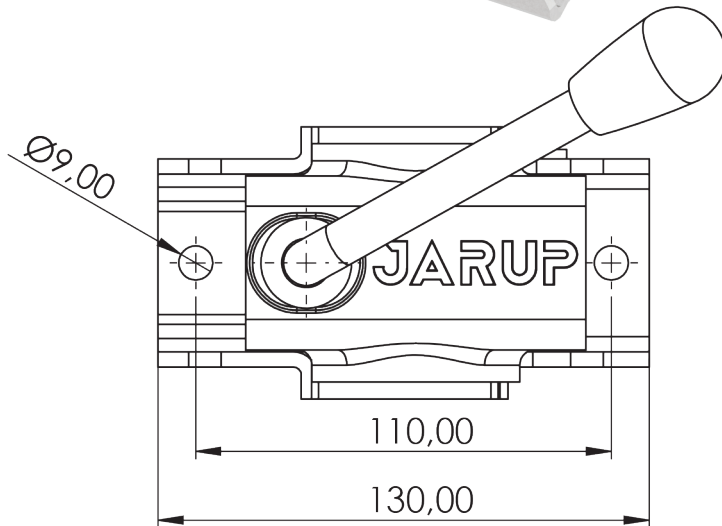
4 - SUPPORT WHEEL HOLDER



Technical Specifications

Diameter : 48 mm
Wight : 0,7 kg
Surface : Galvanized

Code JRC00200



5 - WHEEL BOLT SET



Code JRN00800

BRAKED AXLE SET

6 - BRAKE CABLE

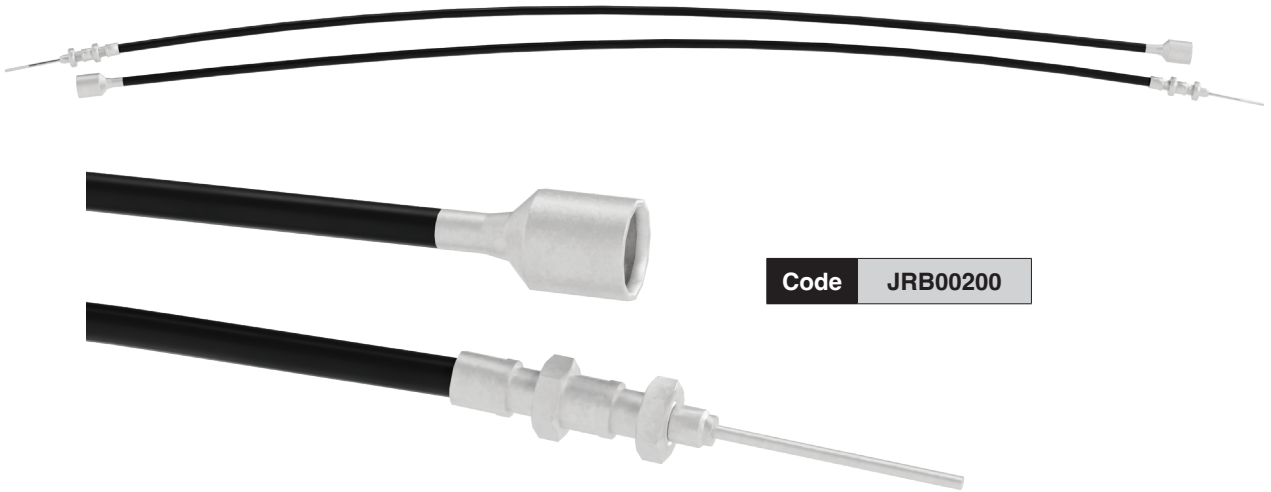
The brake cable is a crucial component that ensures the efficient operation of the braking system in towable caravans. This system transmits the motion from the brake pedal to the brake mechanism, helping the caravan stop quickly and safely. With its durable structure and precise design, it guarantees your safety on every journey.

Responsive and Precise Braking: The brake cable accurately transmits the pressure applied to the braking system, ensuring that the brakes function with precision. This allows you to gradually reduce the speed of your caravan during braking, ensuring a safe and controlled stop.

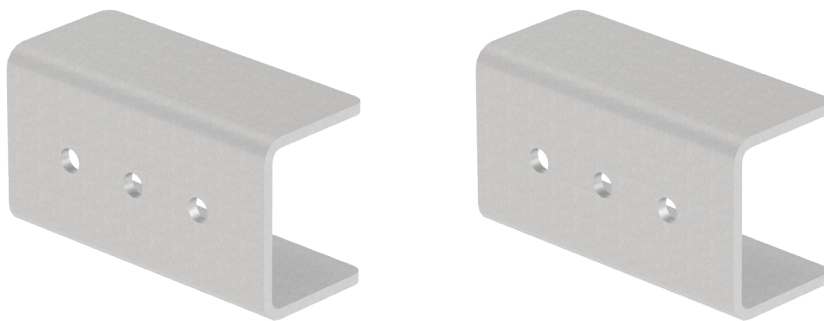
Durable and Long-Lasting: Made from high-quality materials, the brake cable is durable and built to last. It provides continuous and reliable performance in transmitting braking power between the tow vehicle and the caravan. It is resistant to harsh road conditions and environmental factors.

Enhances Driving Safety: By ensuring the caravan's braking system operates smoothly, the brake cable enhances driving safety, especially during emergency braking and cornering. It effectively activates the braking mechanism, maintaining the caravan's stability and preventing it from swerving.

The brake cable, produced with special high-quality material, provides maximum durability and strong performance.



7 - CABLE HOLDER



Code JRC00500

BRAKELESS AXLE SET

1 - BRAKELESS COUPLING

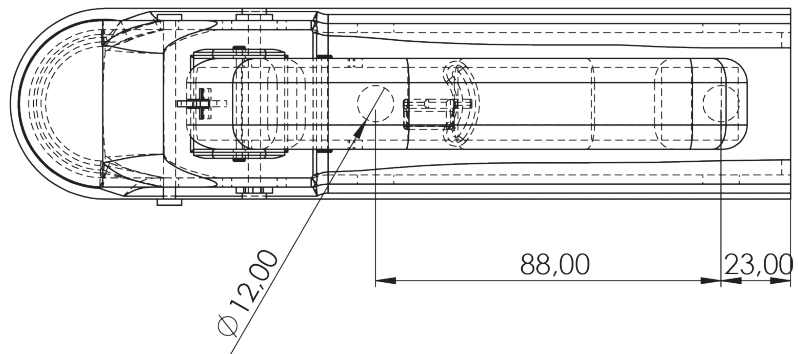
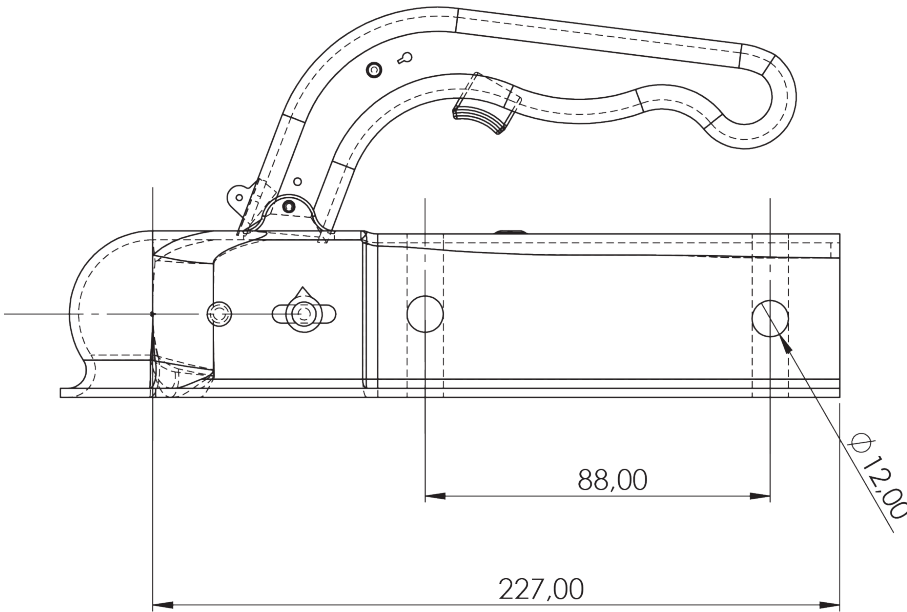
(750 KG - 1050 KG)



Technical Specifications

Permitted total weight : 750 kg - 1050 kg
Weight : Approximate 4 kg

Code JR080100



Note: Please contact us for couplings without brakes in different sizes.

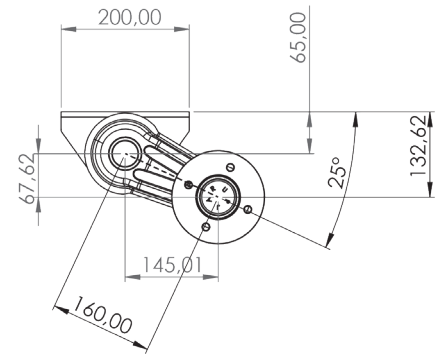
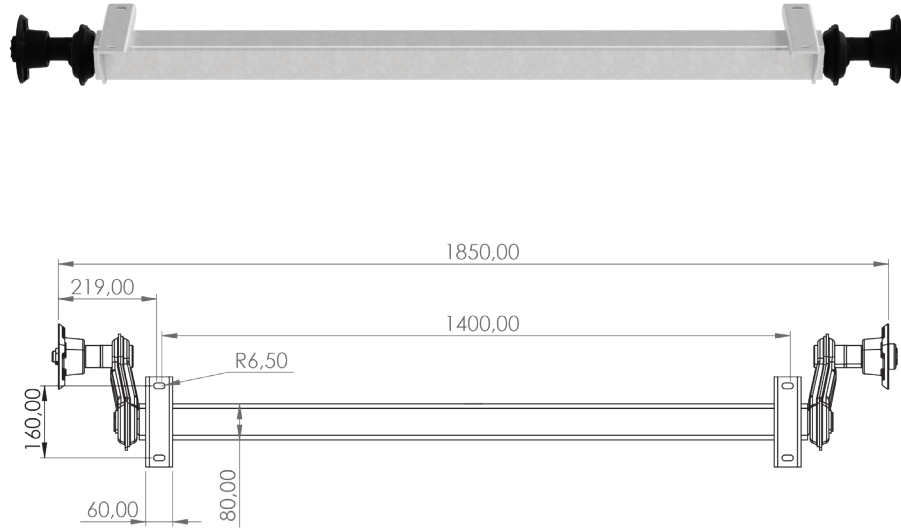
BRAKELESS AXLE SET

2 - BRAKELESS AXLE (1050 KG)

Technical Specifications

| | |
|------------------|------------|
| Axle Load | : 1050 kg |
| Weight | : 27 kg |
| Flange Size | : 1850 mm |
| Wheel Connection | : 100x4 mm |
| Support Size | : 1400 mm |

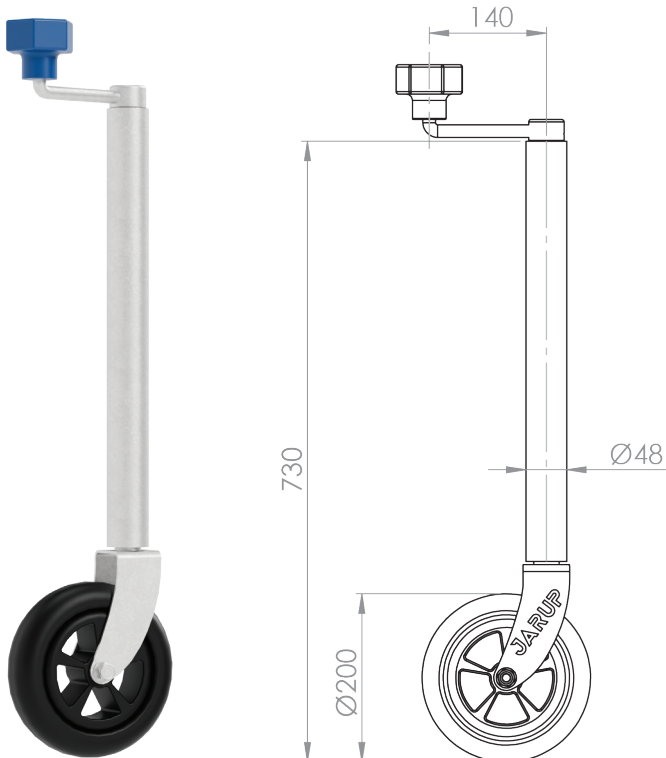
Code JRD01050



Note: For axles without brakes in different sizes, please contact us.

3 - SUPPORT WHEEL

The support wheel provides great convenience when parking and moving your caravan. It is an indispensable piece of equipment for securing, moving, or safely lifting your caravan. With its durable structure and practical design, it assists you on every journey.



Technical Specifications

| | |
|---------------------------|---------------|
| Max static load capacity: | 150 kg |
| Center | : 220 mm |
| Surface treatment | : Galvanized |
| Weight | : 4 kg |
| Wheel Support | : Steel Sheet |
| Outer tube diameter | : 48 mm |
| Wheel size | : 200x50 mm |

Code JRJ00500

Note: Note: Please contact us for support wheels with different sizes.

BRAKELESS AXLE SET

4 - SUPPORT WHEEL HOLDER



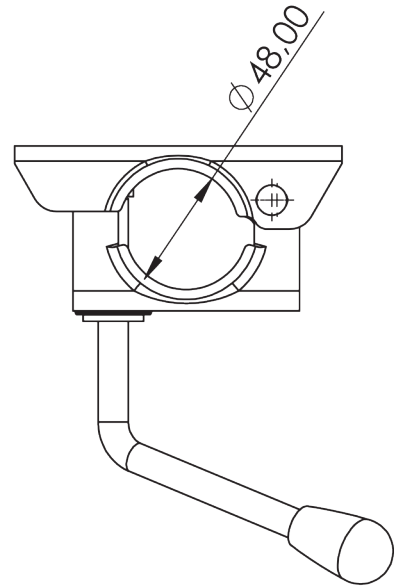
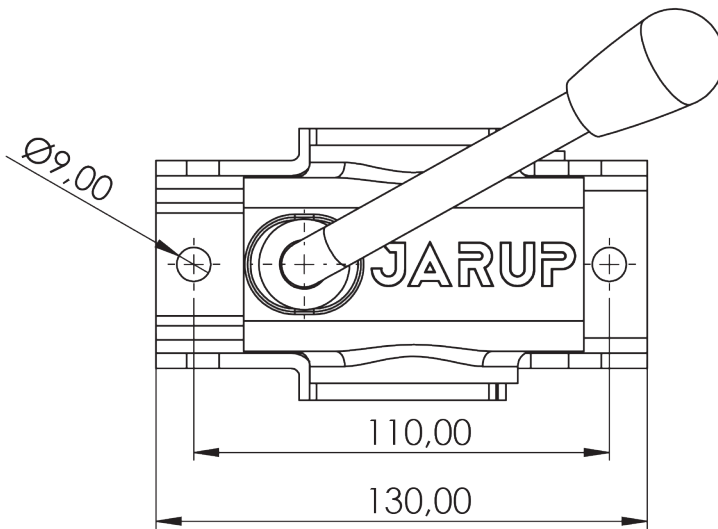
Technical Specifications

Diameter : 48 mm

Wight : 0,7 kg

Surface : Galvanized

Code JRC00200



5 - WHEEL BOLT SET



Code JRN00800

Hadımköy Mah. Alperay Sok. No: 7
Arnavutköy / İstanbul
Tel: +90 212 485 33 43 / +90 531 936 24 90
www.jarup.com.tr

 jarupofficial  jarupofficial  jarup  jarupofficial